



KILTOON
MOTOR CORPORATION

w w w . k i l t o n m o t o r . c o m . p h

KILTON MOTOR CORPORATION

Over **38 years** of industry expertise in the sales and distribution of Diesel, Gasoline and Electric powered equipment in the Philippines.



Kilton Motor Corporation offers a comprehensive range of power generation and industrial equipment. Specializing in the sale of high-quality **Generator Sets, Welding Machines, Air Compressors, and Tower Lights**, our products are engineered for superior performance and durability.



mission

TO BE THE MOST RELIABLE AND COST-EFFECTIVE SERVICE PROVIDER FOR OUR PARTNERS

vision

TO BE RECOGNIZED BY ALL STAKEHOLDERS FOR OUR EXCELLENCE IN DELIVERING PRODUCTS AND SERVICES

core values

INTEGRITY

RESPECT

ACCOUNTABILITY

LOYALTY

TEAMWORK

ACTION

INNOVATION

CARE

1986

Kilton (Mother company) was established. Makati office was purchased (1800 sqm).

1988

Two additional facilities were established. Kilton entered importation and assembly of commercial trucks

1989

Started importation and distribution of power generators in aid to the power crisis in the Philippines

1990

Started the importation of Golf Karts including parts management and material handling.



1992

Completion of Carmona and Batangas Racing Circuits, making Kilton the pioneer in Go-Kart and Formula Racing

1998

Engaged in reconditioning, assembly, and sales of Mitsubishi Forklifts

2000

Kilton was appointed as an Official Dealer of Mitsubishi MGS in the Philippines.

2023

Kilton was awarded by Mitsubishi Heavy Industries Engine Systems Asia Pte Ltd as 2023 MGS Dealer Diamond Award.



Kilton Motor Corporation, a leading entity within the **KILTON GROUP OF COMPANIES**, provides a diverse array of products and services across multiple industries. Specializing in essential equipment and solutions, the company operates in sectors such as construction, material handling, and transportation.

Key Areas of Expertise:

- Generators
- Construction Equipment
- Commercial Trucks
- Road Construction and Rehabilitation
- Material Handling Equipment
- Rental and Leasing of Equipment
- Golf Cars
- Motorsports
- Leisure Products and Services



MITSUBISHI GENERATOR



DENYO GENERATOR



HITACHI EXCAVATOR



HITACHI WHEEL LOADER



KATO CRANE



KOBELCO CRANE



WIRTGEN GROUP OF PRODUCTS



Kali Phil. Marketing Corporation
Alliance Auto & Truck Rebuilders Inc.
Seino Motor Corporation
Kali Marketing Japan



MITSUBISHI FORKLIFT



MITSUBISHI REACH TRUCK



YAMAHA ELECTRIC CART



YAMAHA MOTORCYCLE



HINO TRUCK



SOOSAN CRANE



UNIC CAB BACK CRANE

RENTAL DIVISION



MITSUBISHI GENERATOR



DENYO GENERATOR



AIRMAN AIR COMPRESSOR



GENIE LIFTS



GENERAC TOWER LIGHT



HITACHI EXCAVATOR



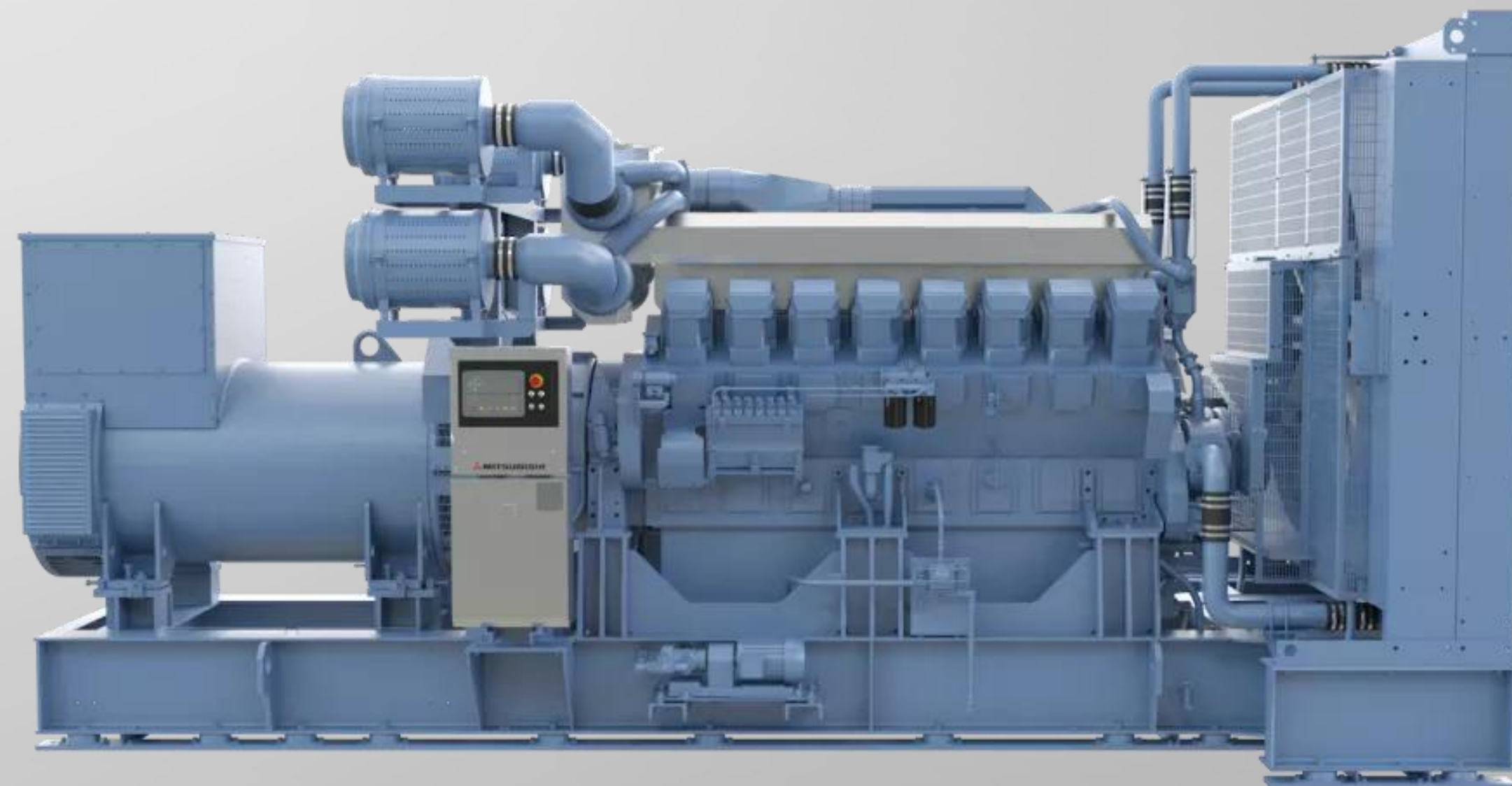
KATO CRANE

POWERING
YOUR SUCCESS



MITSUBISHI GENERATOR SERIES

**RELIABILITY
AND QUALITY
IN POWER
GENERATION**

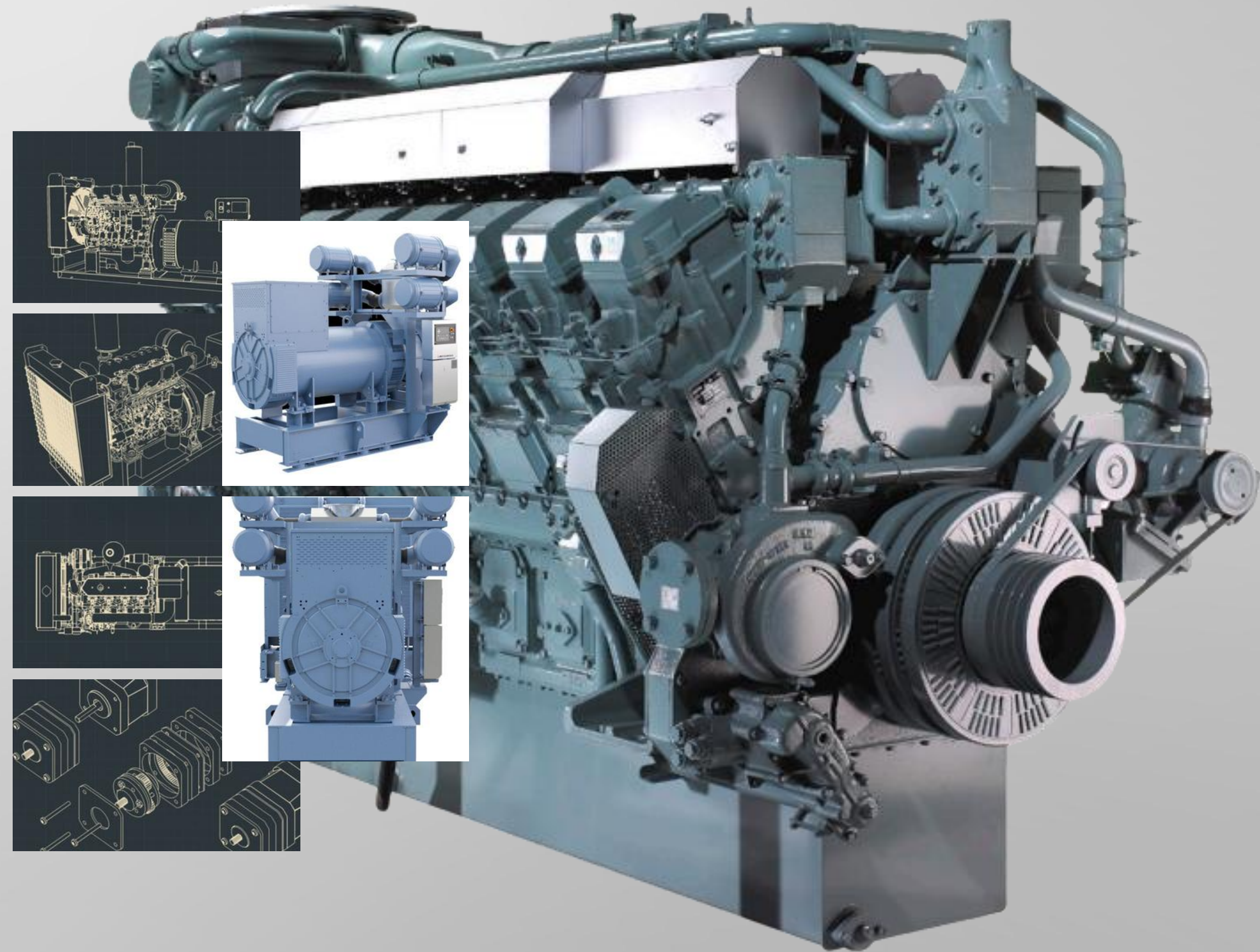




MITSUBISHI GENERATOR SERIES

POWERING
YOUR SUCCESS

Mitsubishi diesel generator sets provide a comprehensive range of versatile power-generating systems, specifically engineered to meet the demands of diverse applications. By seamlessly integrating the best-matched engine and generator systems, Mitsubishi delivers world-class performance characterized by reliability, efficiency, and durability.



MGS-R

SERIES



ALL-IN-ONE DIESEL GENERATOR

- ✓ SUPERIOR ENGINE RELIABILITY
- ✓ ENERGY EFFICIENCY AND FUEL ECONOMY
- ✓ ADVANCED TECHNOLOGY AND PERFORMANCE
- ✓ VERSATILITY ACROSS APPLICATIONS
- ✓ GLOBAL AND LOCAL SUPPORT NETWORK



MGS-R

SERIES



60Hz (1800rpm)						
MGS MODEL	ENGINE MODEL	VOLTAGE	OUTPUT (KW)			
			ESP	CP	PRP	DCCP
MGS2500R	S16R-PTA3	380V/480V	2012		1810	
MGS2400R	S16R-PTA3	380V/480V	1900		1730	
MGS2200R	S16R-PTAR	380V/480V	1700		1550	
MGS1900R	S12R-PTA3	380V/480V	1500		1350	
MGS1600R	S12R-PTAR	380V/480V	1270		1150	
MGS1300R	S12R-PTAR1	380V/480V	1000		900	
MGS1100R	S12A2-PTA2	380V/480V	870		790	600
MGS0800R	S6R-PTAR	380V/480V	630		570	
MGS0700R	S6A3-PTAA	380V/480V	465		430	
MGS0600R	S6A3-PTAR	380V/480V	455		410	350



MGS-R

SERIES

DATA CENTER POWER SERIES



60Hz (1800rpm)				
MGS MODEL	ENGINE MODEL	VOLTAGE	OUTPUT (KW)	
			DCCP	CP
MGS2500R	S16R-PTA3	380V/480V	1810	2012
MGS2400R	S16R-PTA3	380V/480V	1730	1900
MGS2200R	S16R-PTAR	380V/480V	1550	1700
MGS1900R	S12R-PTA3	380V/480V	1350	1500
MGS1600R	S12R-PTAR	380V/480V	1150	1270
MGS1300R	S12R-PTAR1	380V/480V	900	1000
MGS1100R	S12A2-PTA2	380V/480V	790	870
MGS0800R	S6R-PTAR	380V/480V	570	630
MGS0700R	S6A3-PTAA	380V/480V	430	465
MGS0600R	S6A3-PTAR	380V/480V	410	455



MGS-F

SERIES



THE MGS-F GENERATOR DELIVERS WORLD-CLASS PERFORMANCE, STABILITY, AND EFFICIENCY, DESIGNED FOR DEMANDING, CONTINUOUS OPERATION WITH A PERFORMANCE-MATCHED ENGINE AND GENERATOR SYSTEM.

◇ KEY FEATURES:

- ☑ WIDE-RANGE TERMINAL BOX – SUPPORTS VARIOUS CONNECTIONS
- ☑ MGS 7310 CONTROL PANEL – ADVANCED MONITORING & CONTROL
- ☑ DGICS-MIL OPTION – ENHANCED SYSTEM INTEGRATION
- ☑ PMG EXCITATION SYSTEM – ENSURES RELIABLE POWER OUTPUT
- ☑ SEALED AVR – PROTECTS AGAINST ENVIRONMENTAL FACTORS
- ☑ BUILT-IN CURRENT TRANSFORMER – ENSURES PRECISE PROTECTION



MGS-B

SERIES



THE MITSUBISHI MGS-B SERIES DELIVERS EFFICIENT, STABLE, AND DURABLE POWER SOLUTIONS, MAKING IT IDEAL FOR INDUSTRIAL, COMMERCIAL, AND EMERGENCY APPLICATIONS.

◇ KEY FEATURES:

- ☑ HIGH FUEL EFFICIENCY – MAXIMIZES PERFORMANCE WHILE REDUCING COSTS
- ☑ LOW EMISSIONS – ENVIRONMENTALLY FRIENDLY POWER GENERATION
- ☑ EXCELLENT LOAD RESPONSE – ENSURES STABILITY UNDER VARYING POWER DEMANDS
- ☑ MITSUBISHI-POWERED DIESEL ENGINE – BUILT FOR RELIABILITY AND LONG-TERM USE



MGS-HV

SERIES



THE MGS-HV SERIES IS POWERED BY THE ROBUST S-TYPE DIESEL ENGINE, DELIVERING HIGH-VOLTAGE POWER AND UNMATCHED RELIABILITY FOR DEMANDING ENVIRONMENTS.

◇ KEY FEATURES:

- ☑ HIGH VOLTAGE POWER RATINGS – IDEAL FOR HEAVY-DUTY APPLICATIONS
- ☑ IEC CLASS H/F INSULATION – ENHANCED THERMAL PROTECTION
- ☑ BUILT-IN AVR & PMG – ENSURES STABLE AND EFFICIENT POWER OUTPUT
- ☑ IP-22/44 PROTECTION – SHIELDS AGAINST DUST AND MOISTURE
- ☑ ADVANCED MONITORING – REAL-TIME SYSTEM PERFORMANCE TRACKING

ROYCE HOTEL

CLARK
PAMPANGA



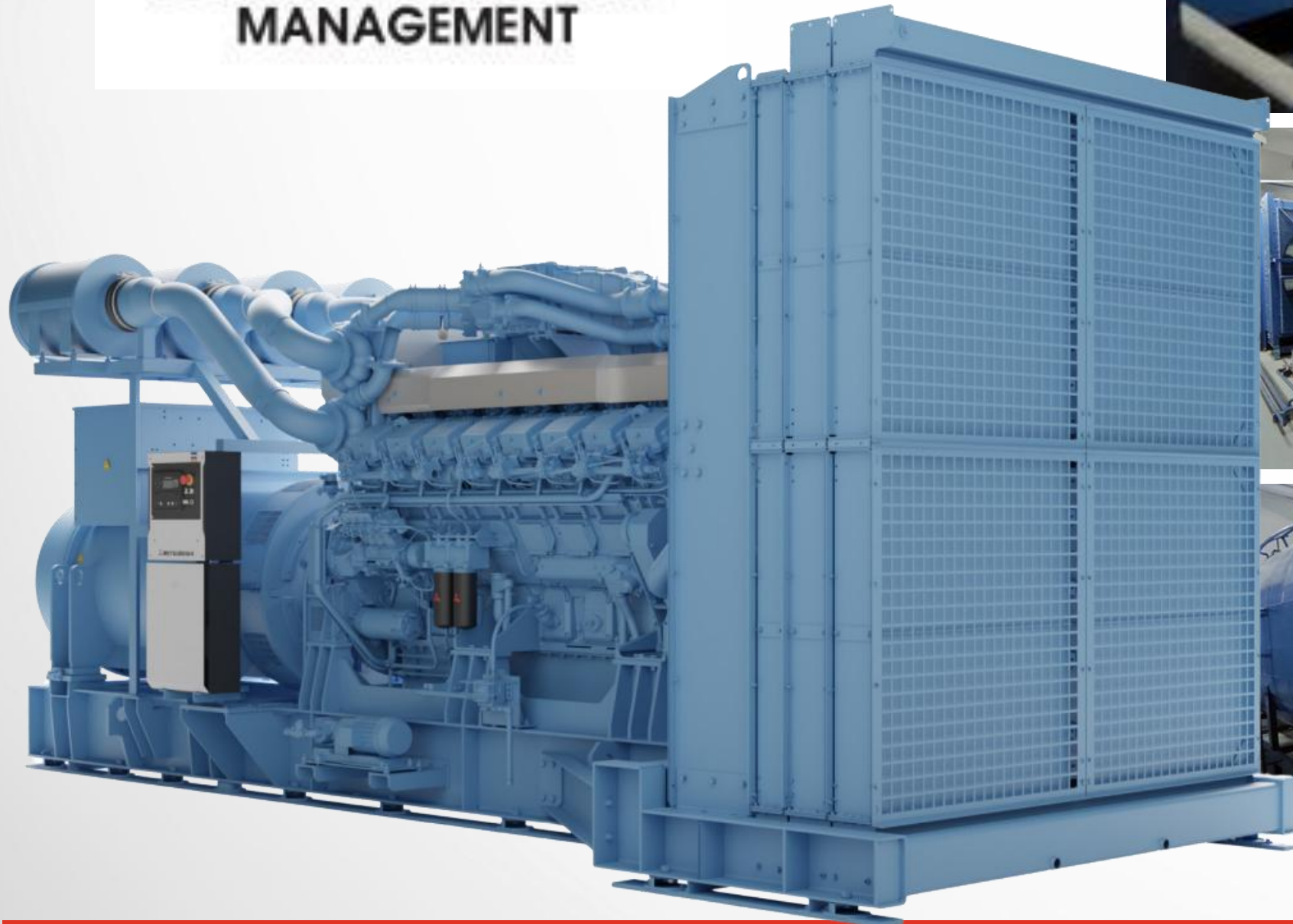
MGS-2500B

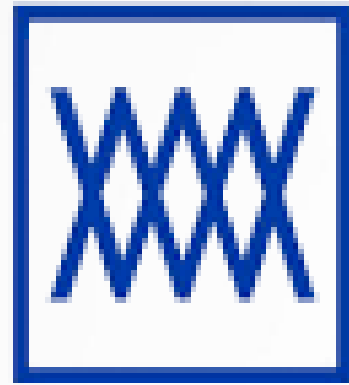


trusted clients

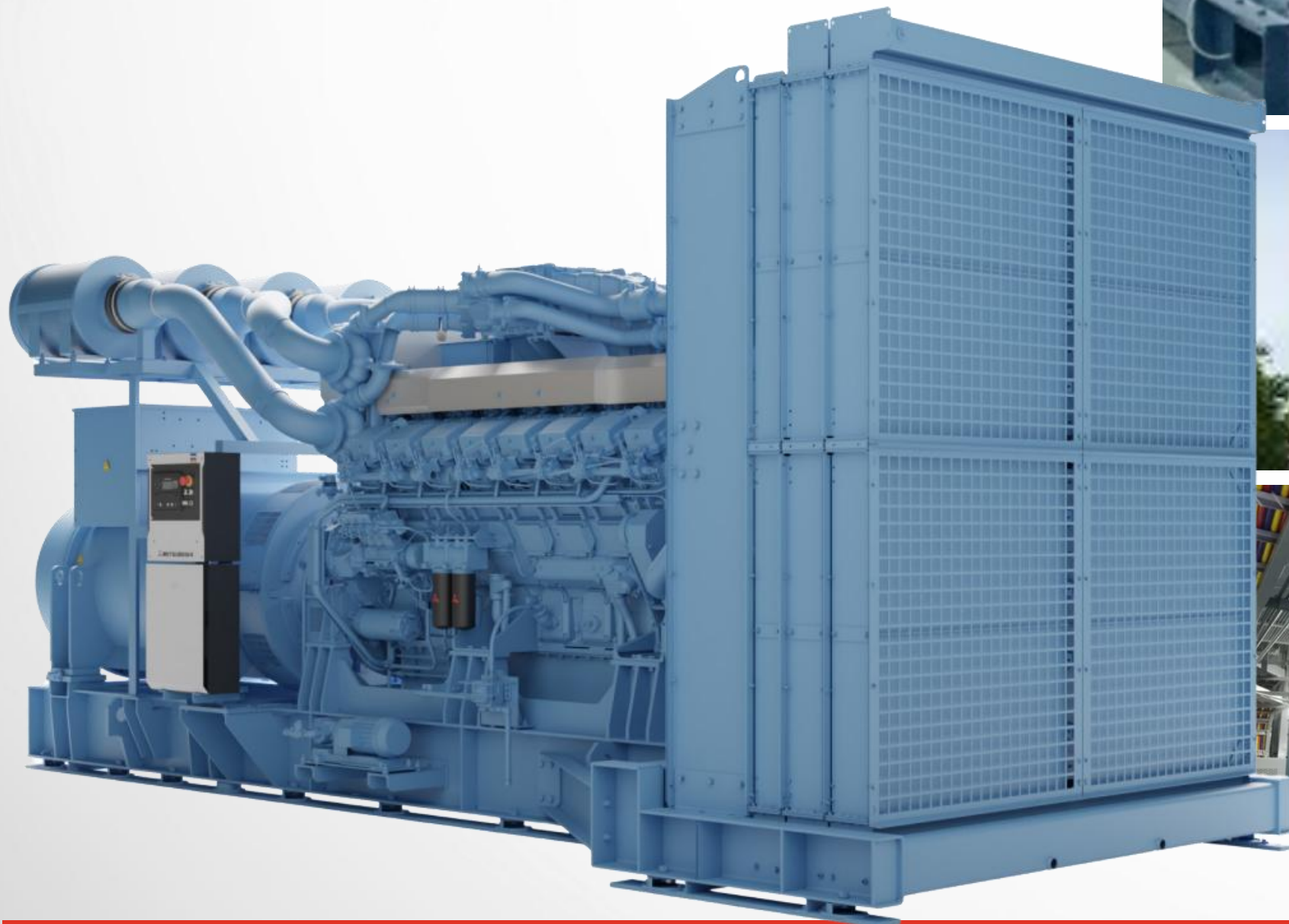


trusted clients





MEGAWORLD



trusted clients



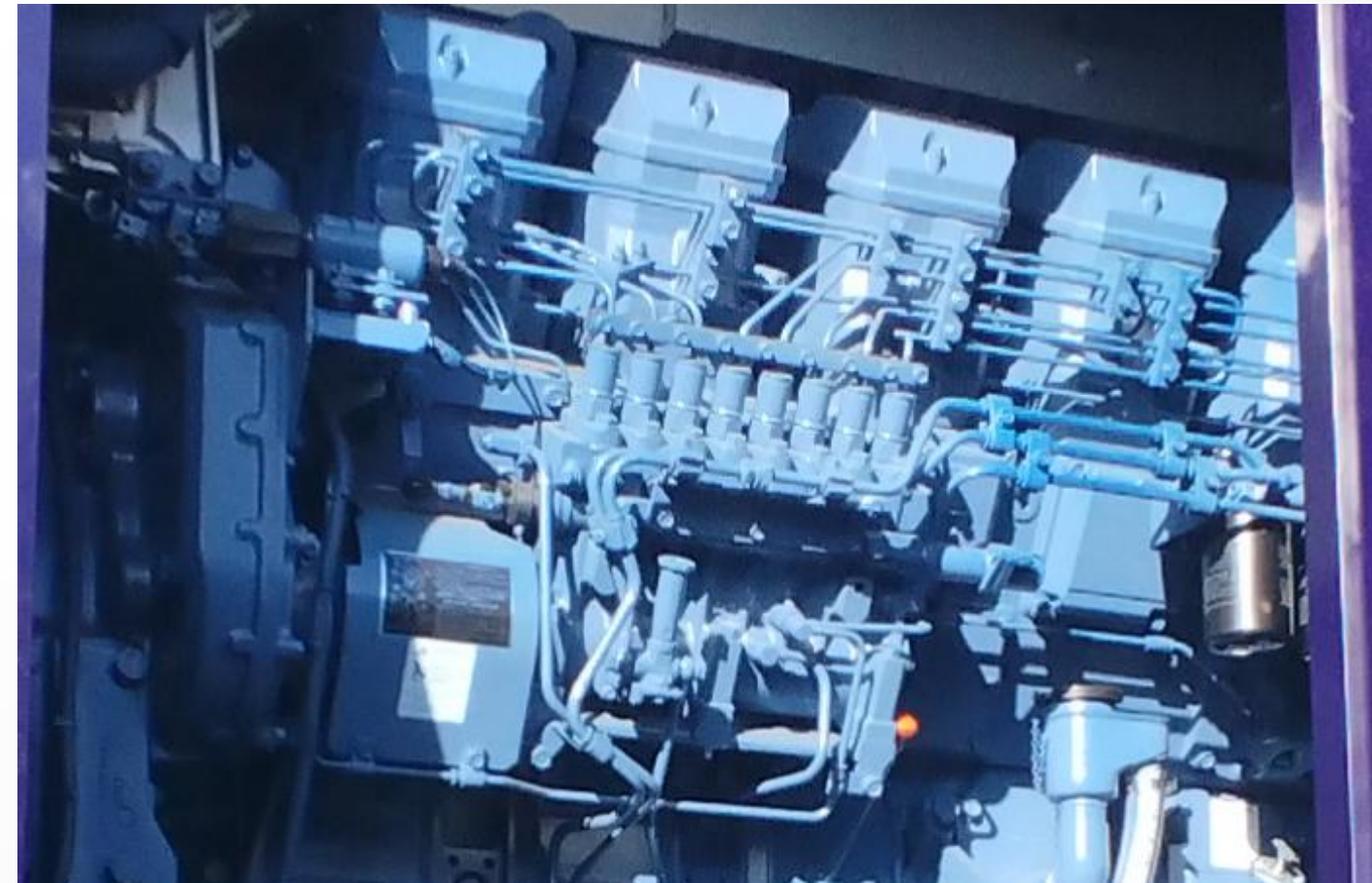
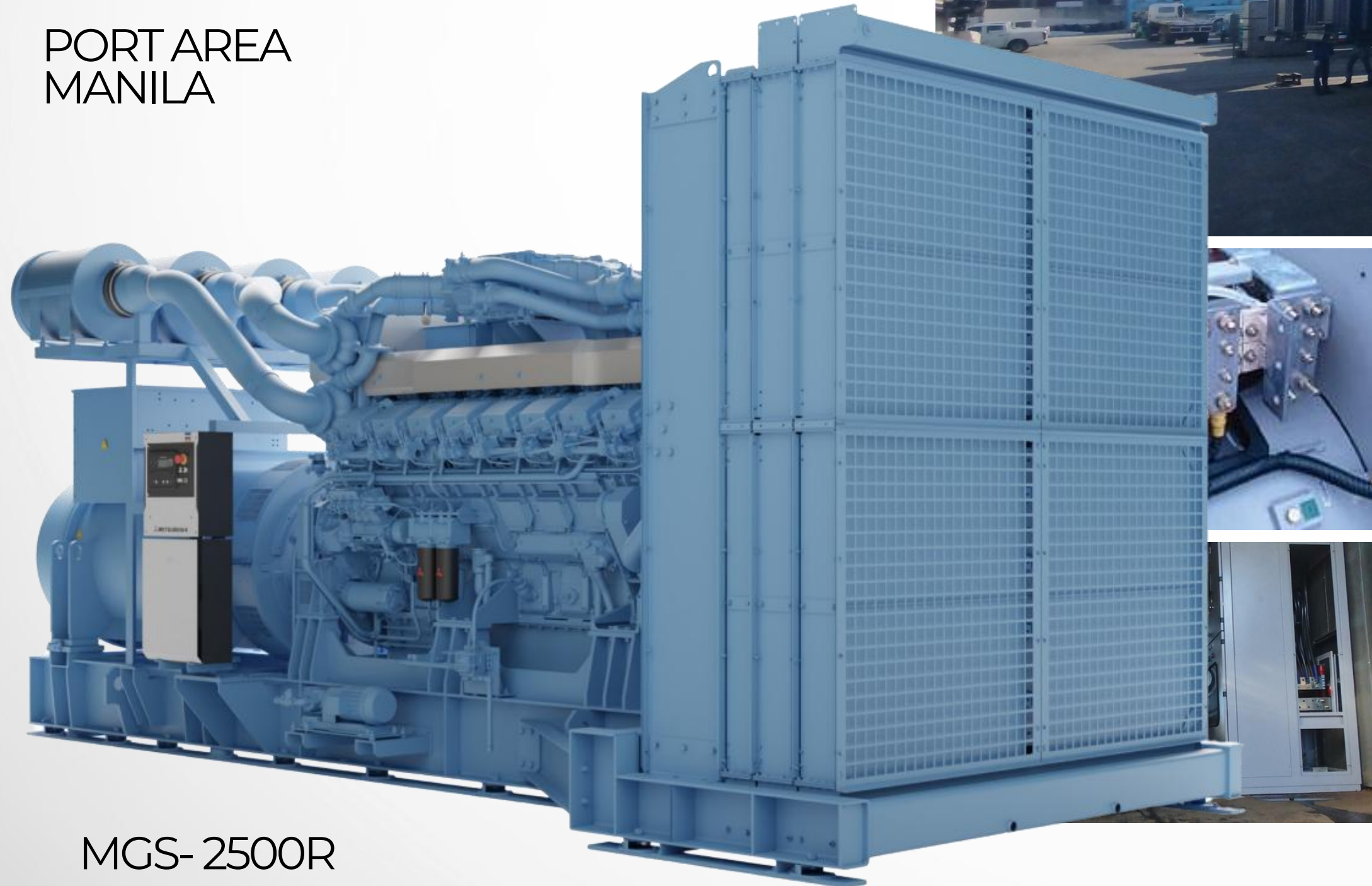
**SAN MIGUEL
CORPORATION**



trusted clients

ICTSI

PORT AREA
MANILA



MGS-2500R

trusted clients



POWERING
YOUR SUCCESS

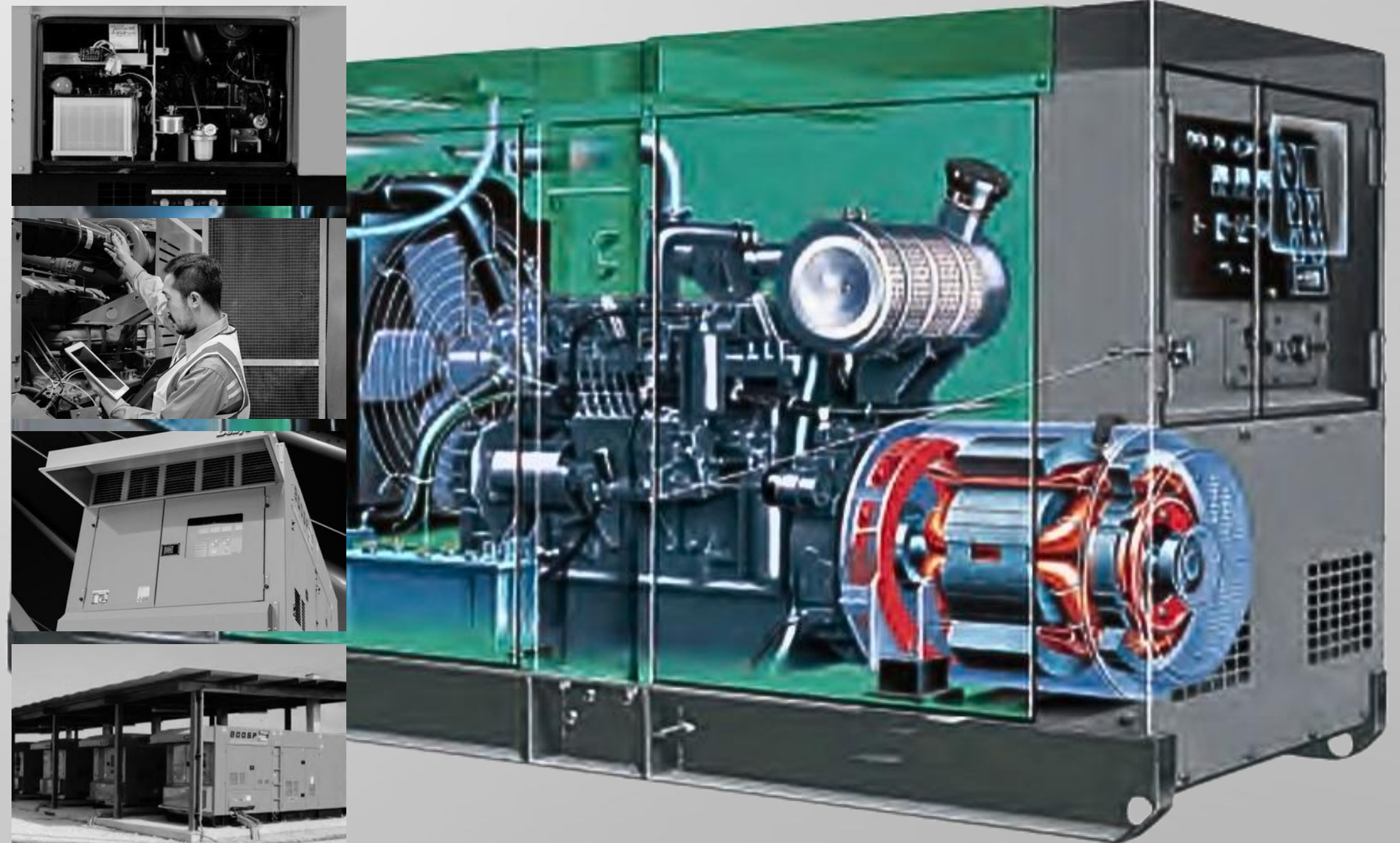
**POWER
FOR THE
WORLD**

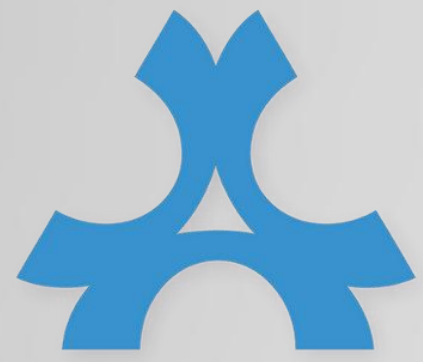




POWERING
YOUR SUCCESS

Denyo's power generators, welders and air compressors delivers versatile and reliable power to civil and construction sites, serve as backups for critical equipment such as medical devices in hospitals, banking systems, and other projects & infrastructures. Essential for providing uninterrupted power to maintain smooth operations during outages.





Denyo

DCA SERIES

THE SILENT DIESEL GENERATOR

- ✓ HIGH-PERFORMANCE - DUAL VOLTAGE SYSTEM
- ✓ PARALLEL OPERATION FEATURE
- ✓ MOBILE AND EASY TRANSPORTABILITY
- ✓ EQUIPPED WITH ELECTRONIC GOVERNORS
- ✓ GLOBAL AND LOCAL SUPPORT NETWORK

POWERING
YOUR SUCCESS





DCA SERIES



SPECIFICATION TABLE (13kVA~45kVA CLASS SOUNDPROOF TYPE)

MODEL		DCA-13LSK	DCA-13LSY	DCA-15LSK	DCA-20LSK	DCA-25ESK	DCA-25ESI	DCA-35SPK	DCA-45ESI								
ALTERNATOR																	
Frequency	Hz	50	60	50	60	50	60	50	60								
Output Rating(kVA)	Continuous	10.5	13	10.5	13	12.5	15	17	20	20	25	20	25	30	35	37	45
	Standby	11	13.7	11.5	14	13.8	16.5	18.7	22	22	27.5	22	27.5	31.5	36.75	38.9	47.3
No. of Phases		3-Phase, 4-Wire															
Rated Voltage*1	V	① or ③ Single Voltage						② Dual Voltage			① or ③ Single Voltage		② Dual Voltage				
Power Factor		0.8 (Lagging)															
Voltage Regulation	%	Within ±0.5															
Excitation		Brushless, Rotating Exciter (With A.V.R.)															
Insulation		Class F														Class H	
ENGINE																	
Maker & Model		Kubota D1403-K3A		Yanmar 3TNV84-G		Kubota D1703-K3A		Kubota V2203-K3A		Kubota V2203-KB		Isuzu AA-4LE2		Kubota V3300-EB		Isuzu BB-4JG1T	
Type		Inlined, Swirl Chambered		Inlined, Direct Injected		Inlined, Swirl Chambered						Inlined, Direct Injected		Inlined, Swirl Chambered		Inlined, Direct Injected, Turbocharged	
Output Rating	PS/rpm	13.7/1500	16.9/1800	15.3/1500	18.3/1800	16.9/1500	20/1800	23.1/1500	27.1/1800	25/1500	32.2/1800	26/1500	32/1800	38.5/1500	44.1/1800	46.5/1500	56/1800
	kW/rpm	10.2/1500	12.4/1800	11.3/1500	13.5/1800	12.4/1500	14.7/1800	17.0/1500	19.9/1800	18.4/1500	23.7/1800	19.1/1500	23.5/1800	28.3/1500	32.4/1800	34.2/1500	41.2/1800
No. of Cylinders-Bore×Stroke	mm	3-80×92.4		3-84×90		3-87×92.4		4-87×92.4		4-87×92.4		4-85×96		4-98×110		4-95.4×107	
Piston Displacement	L	1.393		1.496		1.647		2.197		2.197		2.179		3.318		3.059	
Fuel		ASTM No. 2 Diesel Fuel or Equivalent															
Fuel Consumption*2	L/h	2.4	2.9	2.1	2.6	2.8	3.4	3.6	4.3	3.9	4.9	3.3	4.2	5.8	6.9	6.3	7.8
Lube Oil Sump Capacity	L	5.6		6.7		5.6		7.6		7.6		8.5		13.2		10	
Coolant Capacity	L	6.4		3.9		6.4		7.9		7.9		6.6		10.5		10.9	
Battery×Quantity		80D26R×1												95D31R×1			
Fuel Tank Capacity	L	62						70						82		100	
UNIT																	
Dimensions	Length mm	1390		1390		1390		1540		1540		1540		1900		1900	
	Width mm	650		650		650		650		650		680		860		880	
	Height mm	900		900		900		900		900		900		990		1250	
Dry Weight	kg	503		490		516		580		591		564		890		960	
SOUND LEVEL																	
7m dB (A) 1500/1800 rpm (mir ⁻¹)*3		58	61	61	62	60	63	61	64	62	64	60	64	60	63	60	62



DCA SERIES



SPECIFICATION TABLE (60kVA~150kVA CLASS SOUNDPROOF TYPE)

MODEL		DCA-60ESH	DCA-60ESI2	DCA-75SPI	DCA-100ESI	DCA-125SPK3	DCA-150ESK						
ALTERNATOR													
Frequency	Hz	50	60	50	60	50	60						
Output Rating(kVA)	Continuous	50	60	50	60	65	75	80	100	100	125	125	150
	Standby	55	66	55	66	68.3	78.8	88	110	110	138	138	165
No. of Phases		3-Phase,4-Wire											
Rated Voltage*1	V	④Single Voltage (Dual Voltage is an option)			②Dual Voltage								
Power Factor		0.8 (Lagging)											
Voltage Regulation	%	Within ±0.5											
Excitation		Brushless, Rotating Exciter (With A.V.R.)											
Insulation		Class F	Class H	Class F									
ENGINE													
Maker & Model		Hino W04D-TG		Isuzu BB-4BG1T	Isuzu A-6BG1	Isuzu DD-6BG1T	Komatsu SA6D102E-1-A	Komatsu SAA6D102E-2-D					
Type		Inlined, Direct Injected, Turbocharged			Inlined, Direct Injected	Inlined, Direct Injected, Turbocharged	Inlined, Direct Injected, Turbocharged, Aftercooled						
Output Rating	PS/rpm	66/1500	78/1800	65/1500	77/1800	80/1500	93/1800	100/1500	124/1800	133/1500	157/1800	153/1500	183/1800
	kW/rpm	48.5/1500	57.4/1800	47.9/1500	57.1/1800	58.8/1500	68.4/1800	73.6/1500	91.3/1800	97.8/1500	115.5/1800	113/1500	135/1800
No. of Cylinders-Bore×Stroke	mm	4-104×118		4-105×125	6-105×125	6-105×125	6-102×120		6-102×120				
Piston Displacement	L	4.009		4.329	6.494	6.494	5.880		5.880				
Fuel		ASTM No. 2 Diesel Fuel or Equivalent											
Fuel Consumption*2	L/h	8.8	10.6	8.7	11.0	10.8	12.5	13.5	17.4	15.5	20.1	20.6	25.0
Lube Oil Sump Capacity	L	16.5		13.2	19.3	22.4	22		22				
Coolant Capacity	L	12.2		15.4	22.9	22.0	23.9		28.4				
Battery×Quantity		80D26R×2		120E41R×1	95E41R×2	95D31R×2	95E41R×2						
Fuel Tank Capacity	L	125		125	155	225	250						
UNIT													
Dimensions	Length mm	2050		2200	2630	2750	3000		3250				
	Width mm	880		880	1000	1050	1080		1080				
	Height mm	1250		1250	1300	1350	1500		1500				
Dry Weight	kg	1240		1120	1590	1730	2120		2390				
SOUND LEVEL													
7m dB (A) 1500/1800 rpm (mirr ¹)*3		61	64	61	64	61	63	59	61	63	66	62	65



DCA

SERIES

SPECIFICATION TABLE (150kVA~600kVA CLASS SOUNDPROOF TYPE)



MODEL	DCA-150ESM		DCA-220ESM		DCA-220SPK3		DCA-300SPK3		DCA-400SPKII		DCA-500SPK		DCA-600SPV		
ALTERNATOR															
Frequency	Hz	50	60	50	60	50	60	50	60	50	60	50	60	50	60
Output Rating(kVA)	Continuous	125	150	200	220	200	220	270	300	350	400	450	500	550	600
	Standby	138	165	220	242	220	242	297	330	385	440	495	550	605	660
No.of Phases		3-Phase,4-Wire													
Rated Voltage*1	V	②Dual Voltage													
Power Factor		0.8(Lagging)													
Voltage Regulation	%	Within ±0.5						Within ±1.0			Within ±0.5				
Excitation		Brushless,Rotating Exciter (With A.V.R.)													
Insulation		Class F													
ENGINE															
Maker & Model		Mitsubishi 6D16-TLE2D		Mitsubishi 6D24-TLE2B		Komatsu S6D125E-2-A		Komatsu SA6D125E-2-A		Komatsu SA6D140-A		Komatsu SA6D170-B		Volvo TAD1642GE	
Type		Inlined,Direct Injected, Turbocharged,Aftercooled				Inlined,Direct Injected, Turbocharged		Inlined,Direct Injected,Turbocharged,Aftercooled							
Output Rating	PS/rpm	153/1500	183/1800	246/1500	270/1800	242/1500	277/1800	316/1500	350/1800	421/1500	485/1800	520/1500	580/1800	659/1500	723/1800
	kW/rpm	113/1500	135/1800	181/1500	199/1800	178/1500	204/1800	232/1500	257/1800	310/1500	357/1800	382/1500	427/1800	485/1500	532/1800
No.of Cylinders-Bore×Stroke	mm	6-118×115		6-130×150		6-125×150			6-140×165		6-170×170		6-144×165		
Piston Displacement	L	7.540		11.940		11.040			15.240		23.150		16.120		
Fuel		ASTM No. 2 Diesel Fuel or Equivalent													
Fuel Consumption*2	L/h	19.8	24.0	33.7	38.1	31.5	35.7	43.6	50.0	52.1	60.8	69.5	83.1	81.2	91.7
Lube Oil Sump Capacity	L	16		37		42		62		74		119		48	
Coolant Capacity	L	26.3		42		36		35		68.4		92.5		93	
Battery×Quantity		95E41R×2		145G51×2 or 155G51×2				190H52×2 or 210H52×2							
Fuel Tank Capacity	L	250		380				490							
UNIT															
Dimensions	Length mm	3350		3700		3650		3750		4200		5480(5000)*3		5180(4700)*3	
	Width mm	1080		1300		1300		1400		1400		1650		1650	
	Height mm	1500		1750		1750		1800		2100		2400		2400	
Dry Weight	kg	2450		3630		3670		4160		5420		8540		7535	
SOUND LEVEL															
7m dB (A) 1500/1800 rpm (min ⁻¹)*4		62	67	61	63	63	65	68	71	67	68	68	71	72	75

denyo generators



DCA

SERIES

SPECIFICATION TABLE (600kVA~1100kVA CLASS SOUNDPROOF TYPE)



MODEL		DCA-600SPK	DCA-610SPM	DCA-800SPK	DCA-800SPM	DCA-1100SPK	DCA-1100SPM2
ALTERNATOR							
Frequency	Hz	50	60	50	60	50	60
Output Rating(kVA)	Continuous	550	600	554	610	700	800
	Standby	605	660	554	610	770	880
No.of Phases		3-Phase,4-Wire					
Rated Voltage*1	V	②Dual Voltage				③Single Voltage	
Power Factor		0.8 (Lagging)					
Voltage Regulation	%	Within ±0.5					
Excitation		Brushless,Rotating Exciter (With A.V.R.)					
Insulation		Class F					
ENGINE							
Maker & Model		Komatsu SA6D170A		Mitsubishi S6R-PTA		Komatsu SA12V140	
Type		Inlined,Direct Injected,Turbocharged,Aftercooled				V12 Direct InjectedTurbocharged, Aftercooled	
Output Rating	PS/rpm	639/1500	698/1800	703/1500	768/1800	834/1500	1000/1800
	kW/rpm	470/1500	513/1800	517/1500	565/1800	613/1500	736/1800
No.of Cylinders-BoreXStroke	mm	6-170×170		6-170×180		12-140×165	
Piston Displacement	L	23.150		24.500		30.480	
Fuel		ASTM No. 2 Diesel Fuel or Equivalent					
Fuel Consumption*2	L/h	81.8	93.7	82.0	96.4	102	120
Lube Oil Sump Capacity	L	119		92		151	
Coolant Capacity	L	112		118		170	
BatteryXQuantity		190H52×2 or 210H52×2				190H52×4 or 210H52×4	
Fuel Tank Capacity	L	490				600	
UNIT							
Dimensions	Length mm	5580(5100)*3		5280(4800)*3		6110(5500)*3	
	Width mm	1650		1650		1950	
	Height mm	2400		2400		2500	
Dry Weight	kg	8860		8700		11200	
SOUND LEVEL							
7m dB (A) 1500/1800 rpm (mirr-1)*4		67	71	69	72	70	72

denyo generators



Denyo

DCW SERIES

POWERING
YOUR SUCCESS

ALL-IN-ONE WELDING SOLUTION

- ☑ 450A DC ARC WELDING POWER SOURCE
- ☑ 450A DC ARC WELDING POWER SOURCE
- ☑ LOW FUEL CONSUMPTION AND LONG LIFE
- ☑ SPECIAL DESIGN FACILITATES USE IN
VIRTUALLY ANY LOCATION





DCW SERIES

DCW-480ESW CC/CV

SPEC./MODEL		DCW-480ESW									
Frequency	Hz	50									
DC WELDING OUTPUT	Rated output	kW	CC:17.1/CV:16.4								
	Rated current	A	450								
	Rated voltage	V	CC:38.0/CV:36.5								
	Single	Current Range	A	CC:60~480							
		Voltage Range	V	CV:14~37							
	Dual	Current Range	A	CC:30~240							
		Voltage Range	V	CV:14~37							
	Rated Speed	min ⁻¹	3000								
	Duty Cycle	%	60								
	AC POWER OUTPUT	Three Phase	Rated output	kVA	15						
Rated voltage			V	200	220	380	400	415	440		
Rated current			A	43.3	39.4	22.8	21.7	20.9	19.7		
No. of Phase				3-Phase 4wire							
Power Factor				0.8 (Lagging)							
Excitation				Brushless type (with AVR)							
No. of poles				2							
Insulation				Class F							

ENGINE	Maker/Model	KUBOTA/V1505	
	Type	Water-cooled diesel engine	
	Number of cylinders	4	
	Bore×Stroke	mm	78X78.4
	Total displacement	L	1.498
	Rated output	kW/min ⁻¹	25.2/3000
	Battery	80D26R	
	Fuel	DIESEL FUEL ASTM NO.2 or eq.	
	Fuel tank capacity	L	45
	Lubricating oil capacity	L	6.0 (Oil pan 5.8L+Oil filter 0.2L)
	Cooling water capacity	L	4.85 (Reserve tank included)
	SET	Length	mm
Width		mm	720
Height		mm	885
Dry weight		kg	500
Total weight		kg	558





POWERING
YOUR SUCCESS

DLW

500ISW

SmartStick

SMART STICK FUNCTION improves EFFICIENCY AND PRODUCTIVITY OF WORK!!





DLW SmartStick

500ISW



SPEC./MODEL		DLW-500ISW														
Frequency		Hz	50					60								
DC WELDING OUTPUT	Rated output		kW		CC:17.1/CV:16.4					CC:18.8/CV:18.2						
	Rated current		A		450					480						
	Rated voltage		V		CC:38.0/CV:36.5					CC:39.2/CV:38.0						
	Single	Current Range	A		CC:60~480					CC:60~500						
		Voltage Range	V		CV:14~37					CV:14~40						
	Dual	Current Range	A		CC:30~240					CC:30~250						
		Voltage Range	V		CV:14~29					CV:14~29						
	Rated Speed		min ⁻¹		3000					3600						
Duty Cycle		%		60												
AC POWER OUTPUT	Three Phase	Rated output		kVA		15										
		Rated voltage		V		200	380	400	415	220	240	380	415	440		
		Rated current		A		43.3	22.8	21.7	20.9	39.4	36.1	22.8	20.9	19.7		
		No. of Phase		3-Phase 4wire												
		Power Factor		0.8 (Lagging)												
		Excitation		Brushless type (with AVR)												
		No. of poles		2												
		Insulation		Class F												

ENGINE	Maker/Model		KUBOTA V1505-K3B	
	Type		Water-cooled diesel engine	
	Number of cylinders		4	
	Bore×Stroke		mm	78 x 78.4
	Total displacement		L	1.498
	Rated output		kW/min ⁻¹	24.6/3000 27.1/3600
	Battery		80D26R x 1	
	Fuel		DIESEL FUEL ASTM NO.2 or eq.	
	Fuel tank capacity		L	56
	Lubricating oil capacity		L	6.0 (Oil pan 5.8L+Oil filter 0.2L)
Cooling water capacity		L	4.85 (Reserve tank included)	
SET	Length		mm	1550
	Width		mm	800
	Height		mm	885
	Dry weight		kg	542
	Total weight		kg	599



POWERING
YOUR SUCCESS

DAW

SERIES

500A

PERMANENT MAGNET
WELDER



DAW-500S



DAW-500SS



DAW 500S

DC WELDING GENERATOR	Type	Performance magnet type
	Rated speed	2800min ⁻¹
	Rated output	DC18kW
	Rated current	460A
	Rated voltage	38.4V
	Current range	40~500A
	Applicable electrode	2.6~8 mm
Duty cycle	75%	
AUXILIARY AC POWER	Maximum output	AC3.0kW
	Rated voltage	100/110/120/200/220/230/240V
	Frequency	50Hz or 60Hz
Dimensions (LxWxH)		1260 x 800 x 870 mm



ENGINE	Model	Kubota D-1703
	Type	4-cycle, water-cooled diesel engine
	Rated output	25.4kW (34.5PS)/2800min ⁻¹
	No. of cylinders	3
	Displacement	1.647L
	Fuel	ASTM No. 2 diesel fuel or equivalent
	Fuel consumption	5.2L/hr
	Fuel tank capacity	45L
	Starting system	Electric starting
Cooling system	Water-cooled by radiator with fan	
Dry weight		435kg



DAW 500SS



Diesel Engine	
Model	Kubota D1703-KA
Type	4-cycle, water-cooled diesel engine
Rated Output	25.4kW
Rated Speed	2800min ⁻¹
Displacement	1.647L
Fuel	ASTM No.2 diesel fuel or equivalent
Fuel consumption	5.0L/h ^{*1}
Fuel Tank Capacity	45L
Battery×Quantity	65D31R × 1
Dimensions/Weight	
Length×Width×Height	1420×800×900mm
Dry Weight	505kg
Noise	
7mdB(A)	65dB ^{*2}

DC Welding Power	
Rated Output	17.7 k W
Rated Current	460A
Rated Voltage	38.4V
Welding Current Range	40-500A
Rated duty cycle	60%
Applicable electrode	2.0mm-8.0mm
AC Power Source	
Frequency	50/60Hz
Rated Output	3.0kVA
Rated Voltage	100/110/120/200/220/230/240V
No.of Phase	1-Phase
Power Factor	1.0



POWERING
YOUR SUCCESS

DIS SERIES

SOUNDPROOF

ENGINE-DRIVEN COMPRESSORS

- AUTOMATIC AIR BLEEDER
- EASY INSPECTION AND MAINTENANCE
- LOW NOISE LEVEL
- CLEAN ENGINE
- ECO-BASE
- EMERGENCY SHUT-OFF DEVICE



DIS-600EHS



SUPER USER-FRIENDLY USER PANEL



DIS SERIES



DIS-685ESS

TRAILER TYPE



DIS-140LB-C

AFTER-COOLER TYPE



DIS-600EHS

HIGH PRESSURE TYPE



DIS-60LBE

BOX TYPE



DIS-685ESS-D

DRY AIR TYPE

MRT7
SMC MASS RAIL
TRANSIT 7, INC.
SMC INFRASTRUCTURE



trusted clients

GMA



trusted clients

LOLITA'S
BED & BREAKFAST
LUNCH & DINNER



trusted clients

STAGE 3
SKYWAY
SMC INFRASTRUCTURE



trusted clients

trusted clients





mitsubishi
MITSUBISHI HEAVY INDUSTRIES ENGINE SYSTEM ASIA PTE. LTD.

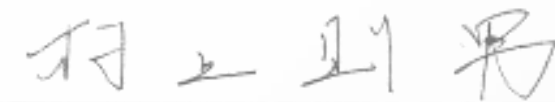
AUTHORIZED DISTRIBUTORSHIP CERTIFICATE

KILTON MOTOR CORPORATION

MITSUBISHI HEAVY INDUSTRIES ENGINE SYSTEM ASIA PTE. LTD. hereby appoints the above company as our Authorized Philippines Distributor for Mitsubishi Generator Series (MGS) products from 02nd June 2024 to 2nd June 2026.



MITSUBISHI HEAVY INDUSTRIES
ENGINE SYSTEM ASIA PTE. LTD.



Norio Murakami / Managing Director



MGS Dealer Award 2023
DIAMOND

Awarded by Mitsubishi Heavy
Industries Engine System Asia
Pte Ltd

June 1, 2023 at Singapore

latest achievement





KILTON MOTOR CORPORATION



**Kilton Bldg., #6 Golden Mile Avenue,
Golden Mile Business Park, Brgy.
Maduya, Carmona, Cavite, Philippines**



**+63 2 8889 1023 / +63 2 8844 5032 /
+63 2 8736 3650 / +63 2 8781 1112 /
+63 2 8844 5031**



**sales@kiltonmotor.com
info@kiltonmotor.com.ph**



www.kiltonmotor.com.ph

**POWERING
YOUR SUCCESS**



www.kiltonmotor.com.ph