

**POWERING
YOUR SUCCESS**



www.kiltonmotor.com.ph

who we are



POWERING
YOUR SUCCESS

KILTON MOTOR CORPORATION

Over **38 years** of industry expertise in the sales and distribution of Diesel, Gasoline and Electric powered equipment in the Philippines.

www.kiltonmotor.com.ph



POWERING
YOUR SUCCESS

Kilton Motor Corporation offers a comprehensive range of power generation and industrial equipment. Specializing in the sale of high-quality **Generator Sets, Welding Machines, Air Compressors, and Tower Lights**, our products are engineered for superior performance and durability.

We are committed to providing reliable and efficient solutions to meet all your power needs, backed by exceptional customer service and support.



who we are

mission

TO BE THE MOST RELIABLE AND COST-EFFECTIVE SERVICE PROVIDER FOR OUR PARTNERS

vision

TO BE RECOGNIZED BY ALL STAKEHOLDERS FOR OUR EXCELLENCE IN DELIVERING PRODUCTS AND SERVICES

core values

INTEGRITY

RESPECT

ACCOUNTABILITY

LOYALTY

TEAMWORK

ACTION

INNOVATION

CARE

1986

Kilton (Mother company) was established. Makati office was purchased (1800 sqm).

1988

Two additional facilities were established. Kilton entered importation and assembly of commercial trucks

1989

Started importation and distribution of power generators in aid to the power crisis in the Philippines

1990

Started the importation of Golf Karts including parts management and material handling.



1992

Completion of Carmona and Batangas Racing Circuits, making Kilton the pioneer in Go-Kart and Formula Racing

1998

Engaged in reconditioning, assembly, and sales of Mitsubishi Forklifts

2000

Kilton was appointed as an Official Dealer of Mitsubishi MGS in the Philippines.

2023

Kilton was awarded by Mitsubishi Heavy Industries Engine Systems Asia Pte Ltd as 2023 MGS Dealer Diamond Award.



POWERING
YOUR SUCCESS

kilton group



KILTON
GROUP OF COMPANIES

Kilton Motor Corporation, a leading entity within the **KILTON GROUP OF COMPANIES**, provides a diverse array of products and services across multiple industries. Specializing in essential equipment and solutions, the company operates in sectors such as construction, material handling, and transportation.

KILTON GROUP OF COMPANIES specializes in generators, commercial trucks, and road construction, positioning them as a trusted partner for large-scale projects and infrastructure development. They also offer golf cars, motorsports vehicles, leisure products, and provide flexible equipment rental and leasing services for various business needs.

Key Areas of Expertise:

- Generators
- Construction Equipment
- Commercial Trucks
- Road Construction and Rehabilitation
- Material Handling Equipment
- Rental and Leasing of Equipment
- Golf Cars
- Motorsports
- Leisure Products and Services



MITSUBISHI GENERATOR



DENYO GENERATOR



HITACHI EXCAVATOR



HITACHI WHEEL LOADER



KATO CRANE



KOBELCO CRANE



WIRTGEN GROUP OF PRODUCTS



MITSUBISHI FORKLIFT



MITSUBISHI REACH TRUCK



YAMAHA ELECTRIC CART



YAMAHA MOTORCYCLE



HINO TRUCK

Kali Phil. Marketing Corporation
Alliance Auto & Truck Rebuilders Inc.
Seino Motor Corporation
Kali Marketing Japan



SOOSAN CRANE



UNIC CAB BACK CRANE

RENTAL DIVISION



MITSUBISHI GENERATOR



DENYO GENERATOR



AIRMAN AIR COMPRESSOR



GENIE LIFTS



GENERAC TOWER LIGHT



HITACHI EXCAVATOR



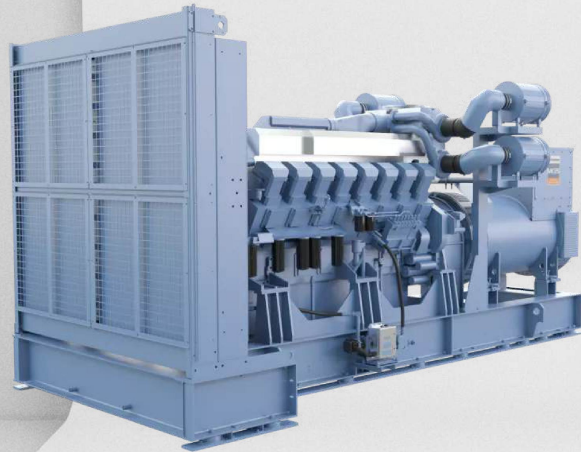
KATO CRANE

POWER
GENERATOR
SOLUTIONS



RELIABILITY AND QUALITY IN POWER GENERATION

Mitsubishi diesel generator sets provide a comprehensive range of versatile power-generating systems, specifically engineered to meet the demands of diverse applications. By seamlessly integrating the best-matched engine and generator systems, Mitsubishi delivers world-class performance characterized by reliability, efficiency, and durability.



**SUPERIOR ENGINE RELIABILITY
ENERGY EFFICIENCY AND FUEL ECONOMY
ADVANCED TECHNOLOGY AND PERFORMANCE
VERSATILITY ACROSS APPLICATIONS
GLOBAL AND LOCAL SUPPORT NETWORK**

**THE POWER
EXPERTS**

www.kiltonmotor.com.ph



mitsubishi generators

MGS-R

SERIES

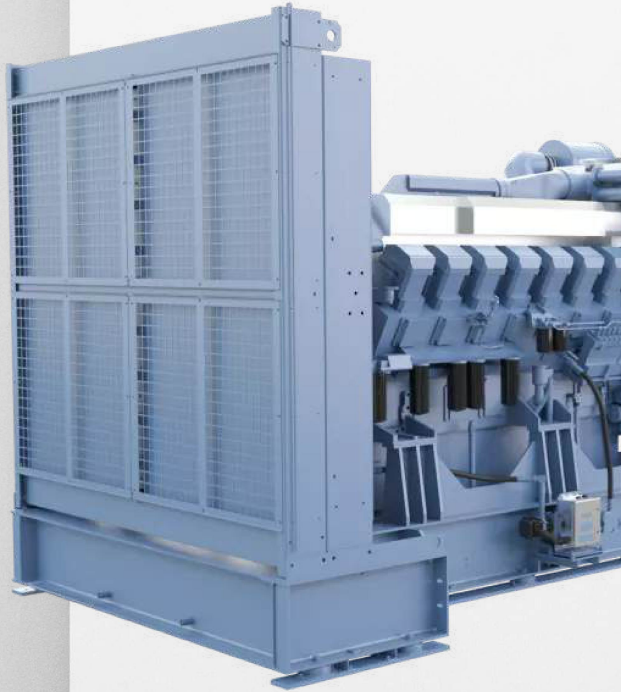


ALL-IN-ONE
DIESEL GENERATOR



MGS-R SERIES

mitsubishi generators



60Hz (1800rpm)							
MGS MODEL	ENGINE MODEL	VOLTAGE	OUTPUT (KW)				
			ESP	CP	PRP	DCCP	COP
MGS2500R	S16R-PTA3	380V/480V	2012		1810		
MGS2400R	S16R-PTA3	380V/480V	1900		1730		
MGS2200R	S16R-PTAR	380V/480V	1700		1550		
MGS1900R	S12R-PTA3	380V/480V	1500		1350		
MGS1600R	S12R-PTAR	380V/480V	1270		1150		
MGS1300R	S12R-PTAR1	380V/480V	1000		900		
MGS1100R	S12A2-PTA2	380V/480V	870		790		600
MGS0800R	S6R-PTAR	380V/480V	630		570		
MGS0700R	S6A3-PTAA	380V/480V	465		430		
MGS0600R	S6A3-PTAR	380V/480V	455		410		350



mitsubishi generators

MGS-DATA CENTER POWER SERIES



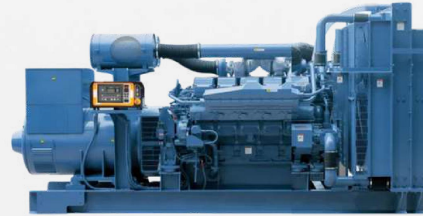
60Hz (1800rpm)				
MGS MODEL	ENGINE MODEL	VOLTAGE	OUTPUT (KW)	
			DCCP	CP
MGS2500R	S16R-PTA3	380V/480V	1810	2012
MGS2400R	S16R-PTA3	380V/480V	1730	1900
MGS2200R	S16R-PTAR	380V/480V	1550	1700
MGS1900R	S12R-PTA3	380V/480V	1350	1500
MGS1600R	S12R-PTAR	380V/480V	1150	1270
MGS1300R	S12R-PTAR1	380V/480V	900	1000
MGS1100R	S12A2-PTA2	380V/480V	790	870
MGS0800R	S6R-PTAR	380V/480V	570	630
MGS0700R	S6A3-PTAA	380V/480V	430	465
MGS0600R	S6A3-PTAR	380V/480V	410	455



MGS LEGACY SERIES



MGS-F Series



MGS-B Series



MGS-HV Series



SOUNDPROOF DIESEL GENERATING SETS

Denyo's DCA series generators deliver reliable power to civil and construction sites, serve as backups for critical equipment such as medical devices in hospitals, banking systems, and traffic signals, and are essential for warehouse and logistics sites, providing uninterrupted power to maintain smooth operations during outages.



**HIGH-PERFORMANCE
LOW FUEL CONSUMPTION
PARALLEL OPERATION FEATURE
DUAL VOLTAGE SYSTEM
EXTREMELY QUIET OPERATION**

**THE POWER
EXPERTS**



SPECIFICATION TABLE (13kVA~45kVA CLASS SOUNDPROOF TYPE)

MODEL		DCA-13LSK	DCA-13LSY	DCA-15LSK	DCA-20LSK	DCA-25ESK	DCA-25ESI	DCA-35SPK	DCA-45ESI										
ALTERNATOR																			
Frequency	Hz	50	60	50	60	50	60	50	60										
Output Rating(kVA)	Continuous	10.5	13	10.5	13	12.5	15	17	20										
	Standby	11	13.7	11.5	14	13.8	16.5	18.7	22										
No. of Phases		3-Phase,4-Wire																	
Rated Voltage*1	V	①or③ Single Voltage				②Dual Voltage			①or③ Single Voltage	②Dual Voltage									
Power Factor		0.8 (Lagging)																	
Voltage Regulation	%	Within ±0.5																	
Excitation		Brushless,Rotating Exciter (With A.V.R.)																	
Insulation		Class F							Class H										
ENGINE																			
Maker & Model		Kubota D1403-K3A		Yanmar 3TNV84-G		Kubota D1703-K3A		Kubota V2203-K3A		Kubota V2203-KB		Isuzu AA-4LE2		Kubota V3300-EB		Isuzu BB-4JG1T			
Type		Inlined, Swirl Chambered		Inlined, Direct Injected		Inlined,Swirl Chambered				Inlined, Direct Injected		Inlined, Swirl Chambered		Inlined,Direct Injected, Turbocharged					
Output Rating	PS/rpm	13.7/1500	16.9/1800	15.3/1500	18.3/1800	16.9/1500	20/1800	23.1/1500	27.1/1800	25/1500	32.2/1800	26/1500	32/1800	38.5/1500	44.1/1800	46.5/1500	56/1800		
	kW/rpm	10.2/1500	12.4/1800	11.3/1500	13.5/1800	12.4/1500	14.7/1800	17.0/1500	19.9/1800	18.4/1500	23.7/1800	19.1/1500	23.5/1800	28.3/1500	32.4/1800	34.2/1500	41.2/1800		
No. of Cylinders-Bore×Stroke	mm	3-80×92.4		3-84×90		3-87×92.4		4-87×92.4		4-87×92.4		4-85×96		4-98×110		4-95.4×107			
Piston Displacement	L	1.393		1.496		1.647		2.197		2.197		2.179		3.318		3.059			
Fuel		ASTM No. 2 Diesel Fuel or Equivalent																	
Fuel Consumption*2	L/h	2.4	2.9	2.1	2.6	2.8	3.4	3.6	4.3	3.9	4.9	3.3	4.2	5.8	6.9	6.3	7.8		
Lube Oil Sump Capacity	L	5.6		6.7		5.6		7.6		7.6		8.5		13.2		10			
Coolant Capacity	L	6.4		3.9		6.4		7.9		7.9		6.6		10.5		10.9			
Battery×Quantity		80D26R×1												95D31R×1					
Fuel Tank Capacity	L	62						70						82		100			
UNIT																			
Dimensions	Length mm	1390		1390		1390		1540		1540		1540		1900		1900			
	Width mm	650		650		650		650		650		680		860		880			
	Height mm	900		900		900		900		900		900		990		1250			
Dry Weight	kg	503		490		516		580		591		564		890		960			
SOUND LEVEL																			
7m dB (A) 1500/1800 rpm (mlrr ⁻¹) ³		58	61	61	62	60	63	61	64	62	64	60	64	60	63	60	62		



SPECIFICATION TABLE (60kVA~150kVA CLASS SOUNDPROOF TYPE)

MODEL		DCA-60ESH	DCA-60ESI2	DCA-75SPI	DCA-100ESI	DCA-125SPK3	DCA-150ESK						
ALTERNATOR													
Frequency	Hz	50	60	50	60	50	60						
Output Rating(kVA)	Continuous	50	60	50	60	65	75	80	100	100	125	125	150
	Standby	55	66	55	66	68.3	78.8	88	110	110	138	138	165
No. of Phases		3-Phase, 4-Wire											
Rated Voltage*1	V	① Single Voltage (Dual Voltage is an option)				② Dual Voltage							
Power Factor		0.8 (Lagging)											
Voltage Regulation	%	Within ±0.5											
Excitation		Brushless, Rotating Exciter (With A.V.R.)											
Insulation		Class F		Class H		Class F							
ENGINE													
Maker & Model		Hino W04D-TG		Isuzu BB-4BG1T		Isuzu A-6BG1		Isuzu DD-6BG1T		Komatsu SA6D102E-1-A		Komatsu SAA6D102E-2-D	
Type		Inlined, Direct Injected, Turbocharged				Inlined, Direct Injected		Inlined, Direct Injected, Turbocharged		Inlined, Direct Injected, Turbocharged, Aftercooled			
Output Rating	PS/rpm	66/1500	78/1800	65/1500	77/1800	80/1500	93/1800	100/1500	124/1800	133/1500	157/1800	153/1500	183/1800
	kW/rpm	48.5/1500	57.4/1800	47.9/1500	57.1/1800	58.8/1500	68.4/1800	73.6/1500	91.3/1800	97.8/1500	115.5/1800	113/1500	135/1800
No. of Cylinders-Bore×Stroke	mm	4-104×118		4-105×125		6-105×125		6-105×125		6-102×120		6-102×120	
Piston Displacement	L	4.009		4.329		6.494		6.494		5.880		5.880	
Fuel		ASTM No. 2 Diesel Fuel or Equivalent											
Fuel Consumption*2	L/h	8.8	10.6	8.7	11.0	10.8	12.5	13.5	17.4	15.5	20.1	20.6	25.0
Lube Oil Sump Capacity	L	16.5		13.2		19.3		22.4		22		22	
Coolant Capacity	L	12.2		15.4		22.9		22.0		23.9		28.4	
Battery×Quantity		80D26R×2		120E41R×1		95E41R×2		95D31R×2		95E41R×2			
Fuel Tank Capacity	L	125		125		155		225		250			
UNIT													
Dimensions	Length mm	2050		2200		2630		2750		3000		3250	
	Width mm	880		880		1000		1050		1080		1080	
	Height mm	1250		1250		1300		1350		1500		1500	
Dry Weight	kg	1240		1120		1590		1730		2120		2390	
SOUND LEVEL													
7m dB (A) 1500/1800 rpm (mlr-1)*3		61	64	61	64	61	63	59	61	63	66	62	65



SPECIFICATION TABLE (150kVA~600kVA CLASS SOUNDPROOF TYPE)

MODEL		DCA-150ESM	DCA-220ESM	DCA-220SPK3	DCA-300SPK3	DCA-400SPKII	DCA-500SPK	DCA-600SPV							
ALTERNATOR															
Frequency	Hz	50	60	50	60	50	60	50	60						
Output Rating(kVA)	Continuous	125	150	200	220	200	220	270	300	350	400	450	500	550	600
	Standby	138	165	220	242	220	242	297	330	385	440	495	550	605	660
No. of Phases		3-Phase, 4-Wire													
Rated Voltage*1	V	②Dual Voltage													
Power Factor		0.8 (Lagging)													
Voltage Regulation	%	Within ±0.5					Within ±1.0			Within ±0.5					
Excitation		Brushless, Rotating Exciter (With A.V.R.)													
Insulation		Class F													
ENGINE															
Maker & Model		Mitsubishi 6D16-TLE2D		Mitsubishi 6D24-TLE2B		Komatsu S6D125E-2-A		Komatsu SA6D125E-2-A		Komatsu SA6D140-A		Komatsu SA6D170-B		Volvo TAD1642GE	
Type		Inlined, Direct Injected, Turbocharged, Aftercooled				Inlined, Direct Injected, Turbocharged		Inlined, Direct Injected, Turbocharged, Aftercooled							
Output Rating	PS/rpm	153/1500	183/1800	246/1500	270/1800	242/1500	277/1800	316/1500	350/1800	421/1500	485/1800	520/1500	580/1800	659/1500	723/1800
	kW/rpm	113/1500	135/1800	181/1500	199/1800	178/1500	204/1800	232/1500	257/1800	310/1500	357/1800	382/1500	427/1800	485/1500	532/1800
No. of Cylinders-Bore×Stroke	mm	6-118×115		6-130×150		6-125×150			6-140×165		6-170×170		6-144×165		
Piston Displacement	L	7.540		11.940		11.040			15.240		23.150		16.120		
Fuel		ASTM No. 2 Diesel Fuel or Equivalent													
Fuel Consumption*2	L/h	19.8	24.0	33.7	38.1	31.5	35.7	43.6	50.0	52.1	60.8	69.5	83.1	81.2	91.7
Lube Oil Sump Capacity	L	16		37		42		62		74		119		48	
Coolant Capacity	L	26.3		42		36		35		68.4		92.5		93	
Battery×Quantity		95E41R×2		145G51×2 or 155G51×2				190H52×2 or 210H52×2							
Fuel Tank Capacity	L	250		380			490								
UNIT															
Dimensions	Length mm	3350		3700		3650		3750		4200		5480(5000)*3		5180(4700)*3	
	Width mm	1080		1300		1300		1400		1400		1650		1650	
	Height mm	1500		1750		1750		1800		2100		2400		2400	
Dry Weight	kg	2450		3630		3670		4160		5420		8540		7535	
SOUND LEVEL															
7m dB (A) 1500/1800 rpm (min ⁻¹)*4		62	67	61	63	63	65	68	71	67	68	68	71	72	75



SPECIFICATION TABLE (600kVA~1100kVA CLASS SOUNDPROOF TYPE)

MODEL		DCA-600SPK	DCA-610SPM	DCA-800SPK	DCA-800SPM	DCA-1100SPK	DCA-1100SPM2	
ALTERNATOR								
Frequency	Hz	50	60	50	60	50	60	
Output Rating(kVA)	Continuous	550	600	554	610	700	800	
	Standby	605	660	554	610	770	880	
No. of Phases		3-Phase,4-Wire						
Rated Voltage*1	V	②Dual Voltage				③Single Voltage		
Power Factor		0.8 (Lagging)						
Voltage Regulation	%	Within ±0.5						
Excitation		Brushless, Rotating Exciter (With A.V.R.)						
Insulation		Class F						
ENGINE								
Maker & Model		Komatsu SA6D170A	Mitsubishi S6R-PTA	Komatsu SA12V140	Mitsubishi S12A2-PTA	Komatsu SAA12V140	Mitsubishi S12H-PTA	
Type		Inlined, Direct Injected, Turbocharged, Aftercooled			V12 Direct Injected Turbocharged, Aftercooled			
Output Rating	PS/rpm	639/1500	698/1800	703/1500	768/1800	834/1500	1000/1800	
	kW/rpm	470/1500	513/1800	517/1500	565/1800	613/1500	736/1800	
No. of Cylinders-Bore×Stroke	mm	6-170×170		6-170×180		12-140×165		
Piston Displacement	L	23.150		24.500		30.480		
Fuel		ASTM No. 2 Diesel Fuel or Equivalent						
Fuel Consumption*2	L/h	81.8	93.7	82.0	96.4	102	120	
Lube Oil Sump Capacity	L	119		92		151		
Coolant Capacity	L	112		118		170		
Battery×Quantity		190H52×2 or 210H52×2			190H52×4 or 210H52×4		145G51×4 or 155G51×4	
Fuel Tank Capacity	L	490				600		800
UNIT								
Dimensions	Length mm	5580(5100)*3		5280(4800)*3		6110(5500)*3		
	Width mm	1650		1650		1950		
	Height mm	2400		2400		2500		
Dry Weight	kg	8860		8700		11200		
SOUND LEVEL								
7m dB (A) 1500/1800 rpm (m/r-1)*4		67	71	69	72	70	72	

WELDER POWER
SOLUTIONS



PIONEER IN WELDING MACHINES

As a leader in welding machines, we have continually advanced the industry by optimizing the welding process while also enhancing fuel efficiency, reducing noise, and offering multi-function capabilities. The high performance and reliability of our welders are proven at worksites across Japan and worldwide.



**HIGH-CAPACITY GENERATOR
LOW FUEL CONSUMPTION
VERSATILE DESIGN FOR ANY LOCATION
DESIGNED FOR REDUCED EMISSIONS**

**THE POWER
EXPERTS**

www.kiltonmotor.com.ph



denyo welders

DCW

480ESW
CC/CV



ALL-IN-ONE WELDING POWER

- 450A DC Arc Welding Power Source
- Types of welding: Stick, Tig, Mig, Flux-cored, Gouging, etc.
- High-Capacity High-Performance Generator
- Low Fuel Consumption and Long Life
- Special Design Facilitates Use in Virtually Any Location



DCW-480ESW CC/CV

SPEC./MODEL		DCW-480ESW							
Frequency		Hz	50						
DC WELDING OUTPUT	Rated output	kW	CC:17.1/CV:16.4						
	Rated current	A	450						
	Rated voltage	V	CC:38.0/CV:36.5						
	Single	Current Range	A	CC:60~480					
		Voltage Range	V	CV:14~37					
	Dual	Current Range	A	CC:30~240					
		Voltage Range	V	CV:14~37					
	Rated Speed	min ⁻¹	3000						
	Duty Cycle	%	60						
	AC POWER OUTPUT	Three Phase	Rated output	kVA	15				
Rated voltage			V	200	220	380	400	415	440
Rated current			A	43.3	39.4	22.8	21.7	20.9	19.7
No. of Phase			3-Phase 4wire						
Power Factor			0.8 (Lagging)						
Excitation			Brushless type (with AVR)						
No. of poles			2						
Insulation			Class F						

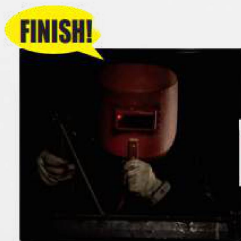
ENGINE	Maker/Model	KUBOTA/V1505	
	Type	Water-cooled diesel engine	
	Number of cylinders	4	
	Bore×Stroke	mm	78X78.4
	Total displacement	L	1.498
	Rated output	kW/min ⁻¹	25.2/3000
	Battery	80D26R	
	Fuel	DIESEL FUEL ASTM NO.2 or eq.	
	Fuel tank capacity	L	45
	Lubricating oil capacity	L	6.0 (Oil pan 5.8L+Oil filter 0.2L)
Cooling water capacity	L	4.85 (Reserve tank included)	
SET	Length	mm	1540
	Width	mm	720
	Height	mm	885
	Dry weight	kg	500
	Total weight	kg	558





DLW-500ISW SmartStick

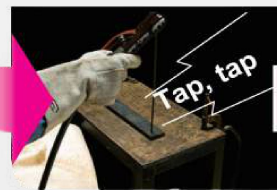
SMART STICK FUNCTION
IMPROVES EFFICIENCY AND
PRODUCTIVITY OF WORK!!



Finish welding



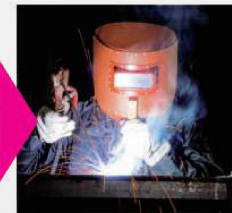
The engine automatically stops within 1 to 30 minutes after welding ceases.



When restarting work, tapping the base metal with the electrode.



The engine welder will restart automatically.



Resume welding works.



DLW-500ISW

SmartStick



SPEC./MODEL		DLW-500ISW																				
Frequency		Hz	50					60														
DC WELDING OUTPUT	Rated output	kW	CC:17.1/CV:16.4					CC:18.8/CV:18.2														
	Rated current	A	450					480														
	Rated voltage	V	CC:38.0/CV:36.5					CC:39.2/CV:38.0														
	Single	Current Range	A	CC:60~480					CC:60~500													
		Voltage Range	V	CV:14~37					CV:14~40													
	Dual	Current Range	A	CC:30~240					CC:30~250													
		Voltage Range	V	CV:14~29					CV:14~29													
	Rated Speed	min ⁻¹	3000					3600														
Duty Cycle	%	60																				
AC POWER OUTPUT	Three Phase	Rated output	kVA										15									
		Rated voltage	V	200	380	400	415	220	240	380	415	440										
	Rated current	A	43.3	22.8	21.7	20.9	39.4	36.1	22.8	20.9	19.7											
	No. of Phase	3-Phase 4wire																				
	Power Factor	0.8 (Lagging)																				
	Excitation	Brushless type (with AVR)																				
	No. of poles	2																				
	Insulation	Class F																				

ENGINE	Maker/Model	KUBOTA V1505-K3B	
	Type	Water-cooled diesel engine	
	Number of cylinders	4	
	Bore×Stroke	mm	78 x 78.4
	Total displacement	L	1.498
	Rated output	kW/min ⁻¹	24.6/3000 27.1/3600
	Battery	80D26R x 1	
	Fuel	DIESEL FUEL ASTM NO.2 or eq.	
	Fuel tank capacity	L	56
	Lubricating oil capacity	L	6.0 (Oil pan 5.8L+Oil filter 0.2L)
Cooling water capacity	L	4.85 (Reserve tank included)	
SET	Length	mm	1550
	Width	mm	800
	Height	mm	885
	Dry weight	kg	542
	Total weight	kg	599



DAW-500S



DAW-500SS



500A PERMANENT MAGNET WELDER

- Dramatically improved arc welding performance
- Lightweight, compact design improves on-site maneuverability
- Economical owing to low fuel consumption
- Designed for increased safety



DAW-500S

DC WELDING GENERATOR	Type	Performance magnet type
	Rated speed	2800min ⁻¹
	Rated output	DC18kW
	Rated current	460A
	Rated voltage	38.4V
	Current range	40~500A
	Applicable electrode	2.6~8 mm
AUXILIARY AC POWER	Duty cycle	75%
	Maximum output	AC3.0kW
	Rated voltage	100/110/120/200/220/230/240V
Frequency		50Hz or 60Hz
Dimensions (LxWxH)		1260 x 800 x 870 mm



ENGINE	Model	Kubota D-1703
	Type	4-cycle, water-cooled diesel engine
	Rated output	25.4kW (34.5PS)/2800min ⁻¹
	No. of cylinders	3
	Displacement	1.647L
	Fuel	ASTM No. 2 diesel fuel or equivalent
	Fuel consumption	5.2L/hr
	Fuel tank capacity	45L
	Starting system	Electric starting
	Cooling system	Water-cooled by radiator with fan
Dry weight		435kg



DAW-500SS

Diesel Engine	
Model	Kubota D1703-KA
Type	4-cycle, water-cooled diesel engine
Rated Output	25.4kW
Rated Speed	2800min ⁻¹
Displacement	1.647L
Fuel	ASTM No.2 diesel fuel or equivalent
Fuel consumption	5.0L/h ¹
Fuel Tank Capacity	45L
Battery×Quantity	65D31R×1
Dimensions/Weight	
Length×Width×Height	1420×800×900mm
Dry Weight	505kg
Noise	
7mdB(A)	65dB ²



DC Welding Power	
Rated Output	17.7 kW
Rated Current	460A
Rated Voltage	38.4V
Welding Current Range	40-500A
Rated duty cycle	60%
Applicable electrode	2.0mm-8.0mm
AC Power Source	
Frequency	50/60Hz
Rated Output	3.0kVA
Rated Voltage	100/110/120/200/220/230/240V
No. of Phase	1-Phase
Power Factor	1.0

***AIR COMPRESSORS
& TOWER LIGHT
SOLUTIONS***



UNMATCHED AIR EFFICIENCY

Denyo Air Compressors provide reliable, high-quality air power for industrial, commercial, and construction applications. Built for durability and efficiency, they ensure optimal performance with minimal downtime and low maintenance.



**THE POWER
EXPERTS**

www.kiltonmotor.com.ph



denyo air compressors

DIS **SERIES**

SOUNDPROOF ENGINE-DRIVEN COMPRESSORS



DIS-600EHS

- AUTOMATIC AIR BLEEDER
- EASY INSPECTION AND MAINTENANCE
- LOW NOISE LEVEL
- CLEAN ENGINE
- ECO-BASE
- EMERGENCY SHUT-OFF DEVICE



SUPER USER-FRIENDLY USER PANEL



denyo air compressors

DIS SERIES

SOUNDPROOF ENGINE-DRIVEN COMPRESSORS



DIS-685ESS

TRAILER TYPE



DIS-140LB-C

AFTER-COOLER TYPE



DIS-600EHS

HIGH PRESSURE TYPE



DIS-60LBE

BOX TYPE



DIS-685ESS-D

DRY AIR TYPE



GENERAC

ILLUMINATING PROGRESS

Built to withstand extreme weather conditions, Generac's light tower's rugged design ensures it delivers reliable illumination where you need it most, no matter the environment.



THE POWER
EXPERTS

www.kiltonmotor.com.ph



GENERAC

ILLUMINATING PROGRESS

VT EVO

- » Fuel Efficient - Diesel Powered
- » 240hrs on a Single Fill
- » 4x320w Super Bright LED Lights
- » Heavy Duty Frame
- » 340 Degrees Rotation



THE POWER
EXPERTS

www.kiltonmotor.com.ph

***PARTS AND
SERVICES
SOLUTIONS***



COMPREHENSIVE MAINTENANCE SOLUTIONS

GENUINE & AFTER-MARKET PARTS

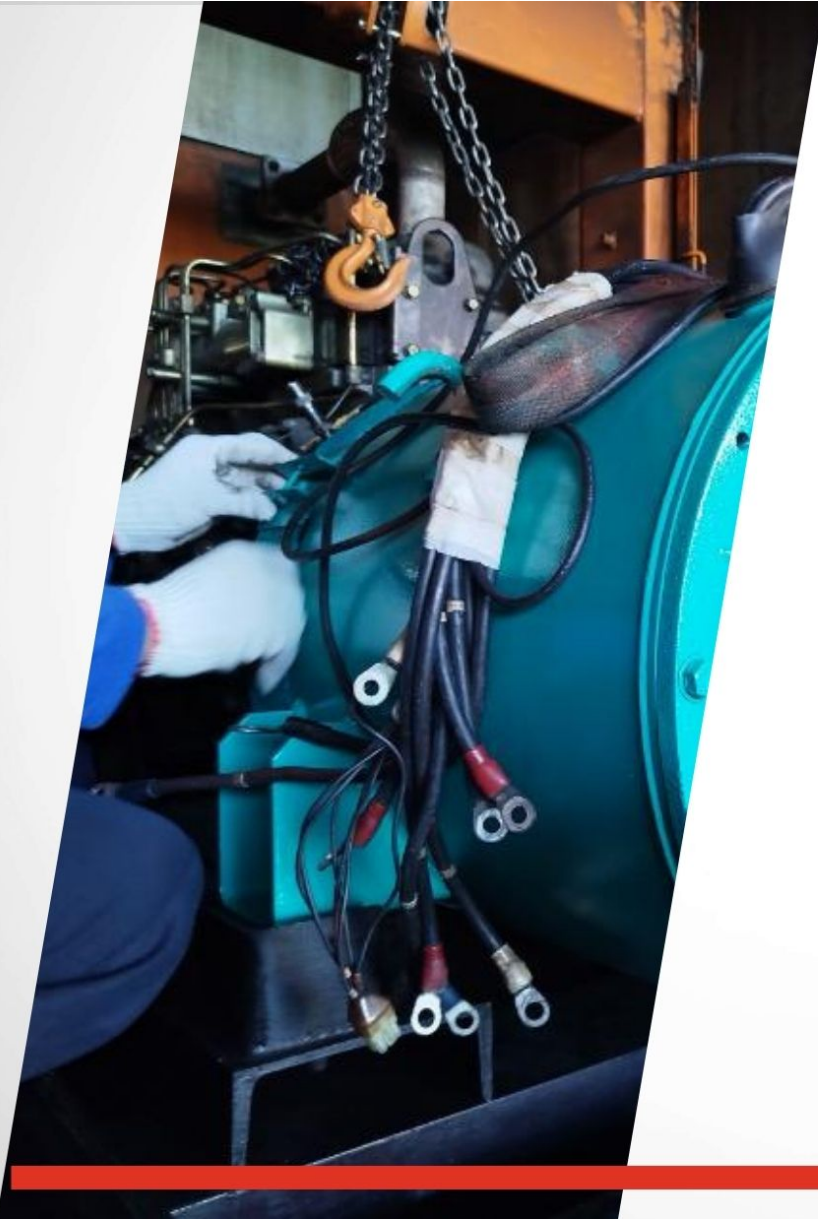
THE POWER
EXPERTS



PREVENTIVE MAINTENANCE

(MONTHLY & QUARTERLY)

Keep your generator running at peak performance with our Preventive Maintenance Service. Backed by over 38 years of expertise, our factory-trained technicians provide scheduled inspections, oil changes, filter replacements, and full system diagnostics — minimizing downtime and extending equipment life

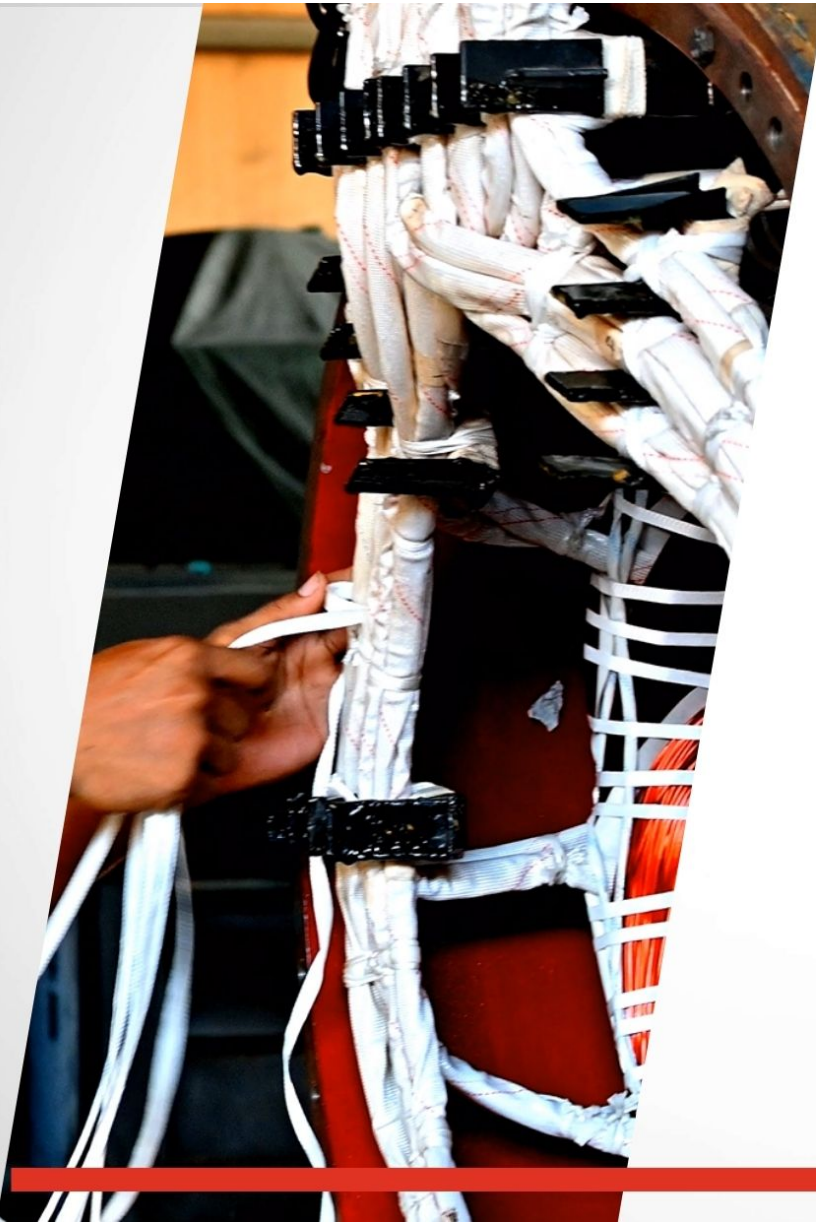


PREVENTIVE MAINTENANCE

ALTERNATOR & MOTOR PUMP

Ensure uninterrupted performance with our Alternator and Motor Pump Preventive Maintenance Service. Designed to catch issues before they become problems, our service keeps your alternator running smoothly and efficiently.

- Winding Resistance Test
- Insulation Test
- Polarization Test
- Surge Comparison Test



RECONDITION & REWIND OF MAIN ALTERNATOR

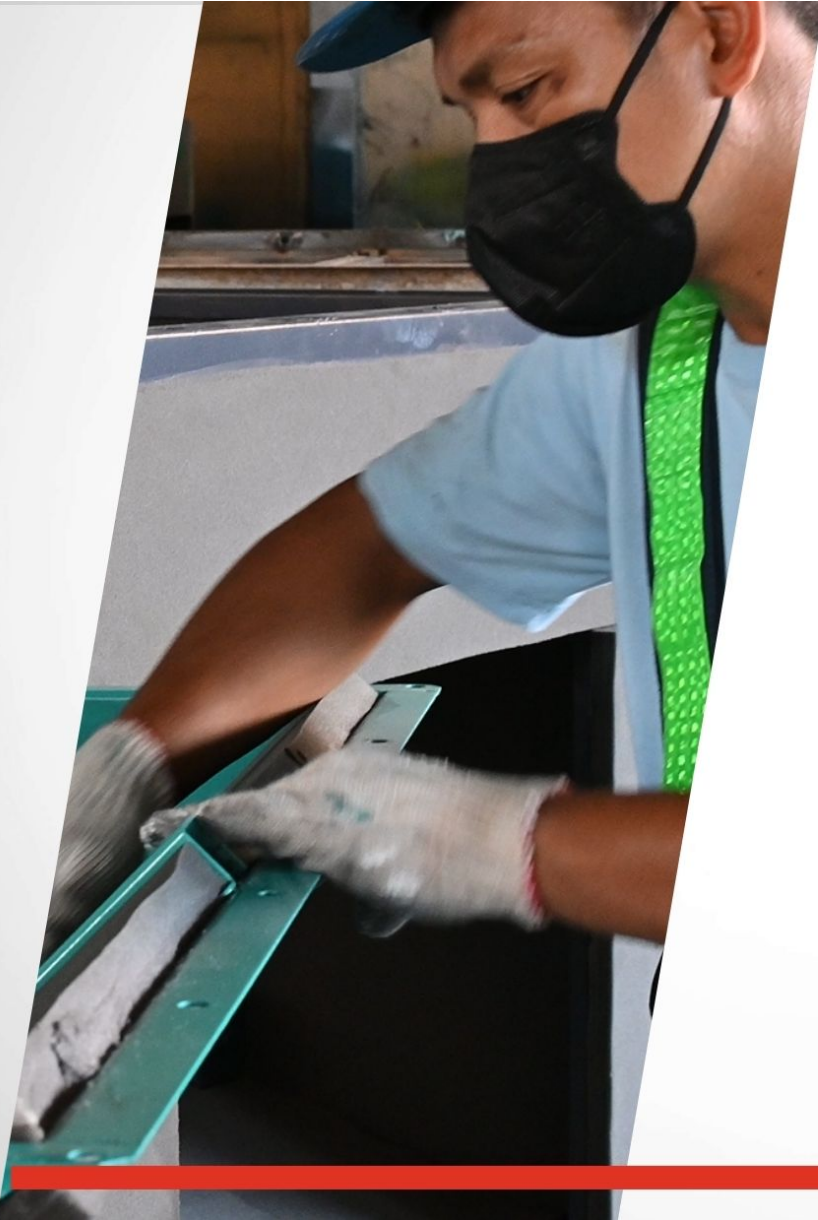
We restore performance by repairing worn windings, cleaning components, and ensuring electrical integrity. Ideal for heavily used units, this service helps avoid costly replacements. With decades of proven expertise, we bring your alternator back to peak condition — efficiently and reliably.



ENGINE OVERHAUL

Restore your generator's power and performance with our Engine Overhaul Service. Ideal for aging or underperforming units, our expert team rebuilds your engine to *near-original condition using precision diagnostics and genuine parts.

*conditions apply



BODY REPAIR, REFOAMING & REPAINTING

We restore your unit's exterior by fixing dents, replacing insulation foam, and applying durable, high-quality paint. This not only improves appearance but also extends protection against rust and wear. Trust us to bring back both the look and longevity of your equipment.



LOAD BANK TESTING

Whether for commissioning, preventive maintenance, or performance verification, Kilton Motor Corporation provides load bank equipment rentals and expert testing services across the Philippines.

SERVICES & PARTS



POWERING
YOUR SUCCESS

GENUINE AND AFTER-MARKET PARTS & CONSUMABLES



Diesel Generators
Engine-driven Welders
Air Compressors



Diesel Generators

GENERAC

Tower Lights

www.kiltonmotor.com.ph

trusted clients







POWERING
YOUR SUCCESS

latest achievement



MGS Dealer Award 2023 **DIAMOND**

Awarded by Mitsubishi Heavy
Industries Engine System Asia
Pte Ltd

June 1, 2023 at Singapore



KILTON MOTOR CORPORATION



**Kilton Bldg., #6 Golden Mile Avenue,
Golden Mile Business Park, Brgy.
Maduya, Carmona, Cavite, Philippines**



**+63 2 8889 1023 / +63 2 8844 5032 /
+63 2 8736 3650 / +63 2 8781 1112 /
+63 2 8844 5031**



**sales@kiltonmotor.com
info@kiltonmotor.com.ph**



www.kiltonmotor.com.ph

**POWERING
YOUR SUCCESS**



www.kiltonmotor.com.ph